



 0051  
 Velure S9  
 meets the  
 provisions  
 of Directive  
 93/42/CEE

Velure S9



**Velure S9**  
 The most versatile Laser  
 for Dentistry


**LASERING**

LASERING S.r.l.  
 Via Staffette Partigiane, 54  
 41122 Modena-ITALY  
 Tel. +39 059 450999 - Fax. +39 059 311096  
 www.lasering.it - www.lasering-med.com  
 E-mail: lasering@lasering.it

LASERING USA  
 2246 Camino Ramon  
 San Ramon, CA 94583  
 Phone 866-471-0469  
 info@laseringusa.com  
 www.laseringusa.com


  
 ISO 9001    ISO 13485  


VS9D050307

**Highly flexible and compact**

The 980 nm wavelength combines the ability to cut and clot using an optical rather than thermal effect. The advantages of optical tissue cauterising over the thermal method, include the reduced damage to the surrounding tissue and the creation of a more solid and longer-lasting clot, with greater benefits to the patient. Velure S9 is therefore the most advanced solution for clinical applications in dentistry.

Velure S9 is currently the most versatile laser available to dentists, it can be connected to domestic power supplies and does not require maintenance. It is light and easy to carry and comes complete with a full basic-accessory set: protective goggles for both patient and dental surgeon, autoclavable handpiece and optic fibres included.

**Easy to use**

Preset treatment protocols for all types of procedures can be easily selected and even modified by the operator to suit requirements using the control panel.

**Advantages**

- The reduced need for anaesthetics is seen by patients as a great relief.
- Ideal for the treatment of patients suffering from phobias, children, pregnant women and those who are allergic to anaesthetics.
- The reduction in bleeding and cauterising effect on small blood vessels make it possible to keep the surgical field clear at all times.
- The immediate desensitising action represents a considerable benefit for many patients.



S9/7D



S9/15D



**SPECIFICATIONS**

	Velure S9/7D	Velure S9/15D
Type of laser:	High-power diodes	
Wavelength:	980nm	
Power:	From 0.2 to 7W	From 0.2 to 15W
Emission mode:	Continuous, Single pulse, Repeat pulse	
Pulse duration:	From 5 to 990 msec	
Frequency:	From 1 to 30 Hz	
Aiming beam:	Power 2 mW; Wavelength 635nm	
Optical Fiber:	200,400,600 micron	
Electrical power:	230Vac - 50/60 Hz - 200 VA	230Vac - 50/60 Hz - 500 VA
Dimensions:	30,5 (W) x 23 (D) x 19 (H) cm	30,5 (W) x 42,5 (D) x 19 (H) cm
Weight:	7 Kg	14 Kg

**INDICATED FOR:**

**Surgery:**

- Gingivectomy
- Gingivoplasty
- Frenectomy
- Operculectomy
- Removal of fibromas and hyperplasia.
- Tufted angioma of the lip
- Removal of granulation tissue from the skin
- Uncovering implants after healing.
- Clotting and cauterising effect.
- Treatment of thrush, epulides and Herpes Simplex.
- Biopsies and excisions.
- Piercing and draining of abscesses, without anaesthetics and decontamination of the operation area.

**Dentures:**

- Clinical crown lengthening
- Preparation of fissure for impressions, without requiring retractor use.

**Oral surgery:**

- Sterilisation of closed curettage periodontal pockets
- Treatment of perapical lesions.

**Root canal treatment:**

- Root canal sterilisation.

**Conservational treatment**

- Desensitisation.
- Sterilisation in the event of accidental uncovering of the pulp.
- Modifications to the enamel and dentine surfaces in order to facilitate the mechanical adhesion of compounds.

**Cosmetic Use:**

- Whitening

**CROWN LENGTHENING**



- Short crowns  
- Mucous membrane thickening  
- Low frenulum



Healing within 20 days

**HYPERTROPHIC FIBRO-MUCOUS TISSUE**



Healing within 5 days

**SOFT TISSUE SURGERY**



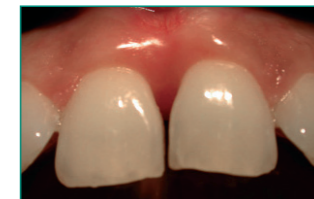
Palate tumefaction



Low labial frenulum insertion



Healing fibrin



Rapid healing without patient discomfort

**ACCESSORIES**

- Attachments for universal handpiece
  - rigid straight and curved cannula, various lengths
  - cannulas that can be moulded and modelled by the dentist to suit all requirements
- Large handpiece teeth whitening

